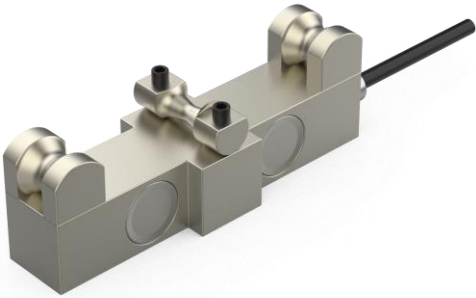


Wire Rope Load Cell



SPECIAL FEATURES

- Capacity 1t-20t
- Rope clamp tension measure Easy to install
- Nickel plated alloy steel
- Output : 4-20ma/A

SPECIFICATION

Standard capacities (E _{max})	50-2000 kg
Rated Output	2mV/V
Zero balance	± 1% of Rated Output
Non Linearity	± 0.03% of Rated Output
Hysteresis	± 0.03% of Rated Output
Non repeatability	± 0.02% of Rated Output
Creep Error (30 Minutes)	± 0.03% of Rated Output
Zero return (30 Minutes)	± 0.03% of Rated Output
Temp effect on min. dead load O/P	± 0.0026% of Rated Output/°C
Temp. effect on sensitivity	± 0.0015% of Rated Output/°C
Compensated temp range	-10°C to +40°C
Operating temp range	-10°C to +60°C
Safe Overload	150% of R.C.
Ultimate Overload	200% of R.C.
Excitation, recommended	10V DC
Excitation, maximum	15V DC



Input resistance	360±10 Ohms
Output resistance	350±3 Ohms
Insulation Resistance	5000 Mega Ohms
Material	Alloy Steel
Protection Class	IP66

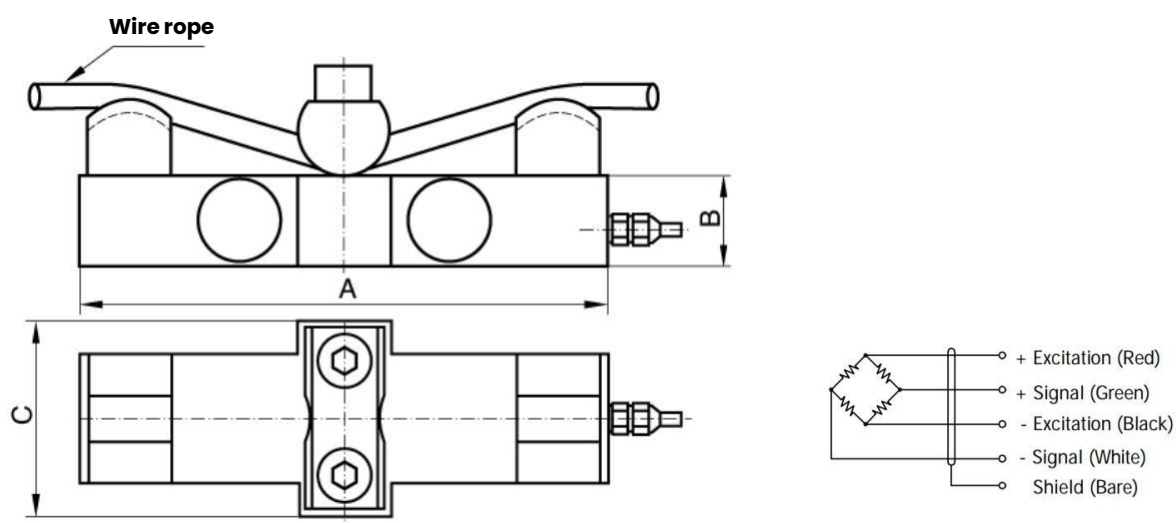
Description

The Wire rope range of rope clamp load cells are for measuring tension in wire ropes. These load cells have a double ended beam design and are available in 3T, 5T and 10T nominal capacities.

The Wire rope can be used to prevent slack cable and overload conditions when paired with the appropriate load cell electronics with setpoint relay control, and also be paired with a large digit scoreboard to display the weight on the hook.

By using electronics that has multi-point linearization capabilities the calibration can be done in the field with multiple known weights to improve the overall accuracy of the load limiting crane scale system

Dimensions (mm)



Tension	Rope diameter	A	B	C
1t	Φ6-Φ14	160	28	60
2t	Φ10-Φ18	160	28	60
4-6t	Φ16-Φ26	180	34	68
10-15t	Φ24-Φ36	200	40	80
20t	Φ24-Φ36	240	46	90

*Specification subject to change without notice



Synopsis Techno Instruments

409/B-Wing, Kempas Plaza, Chincholi Bunder, Malad (W), Mumbai, India, Pin - 400 064

Contact : +91 22 400 30 704 /06 Email : admin@synapsistechno.in,

www.synapsistechno.in